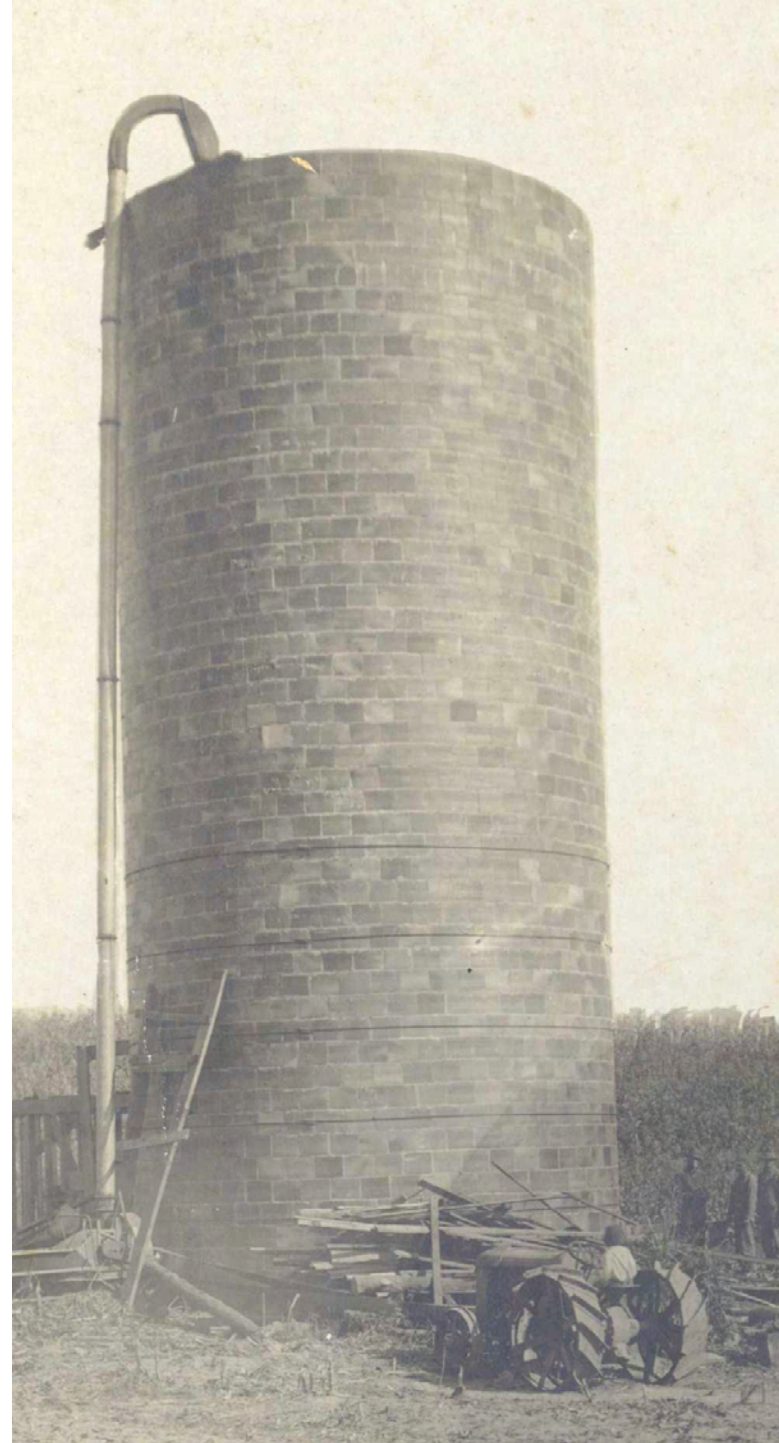
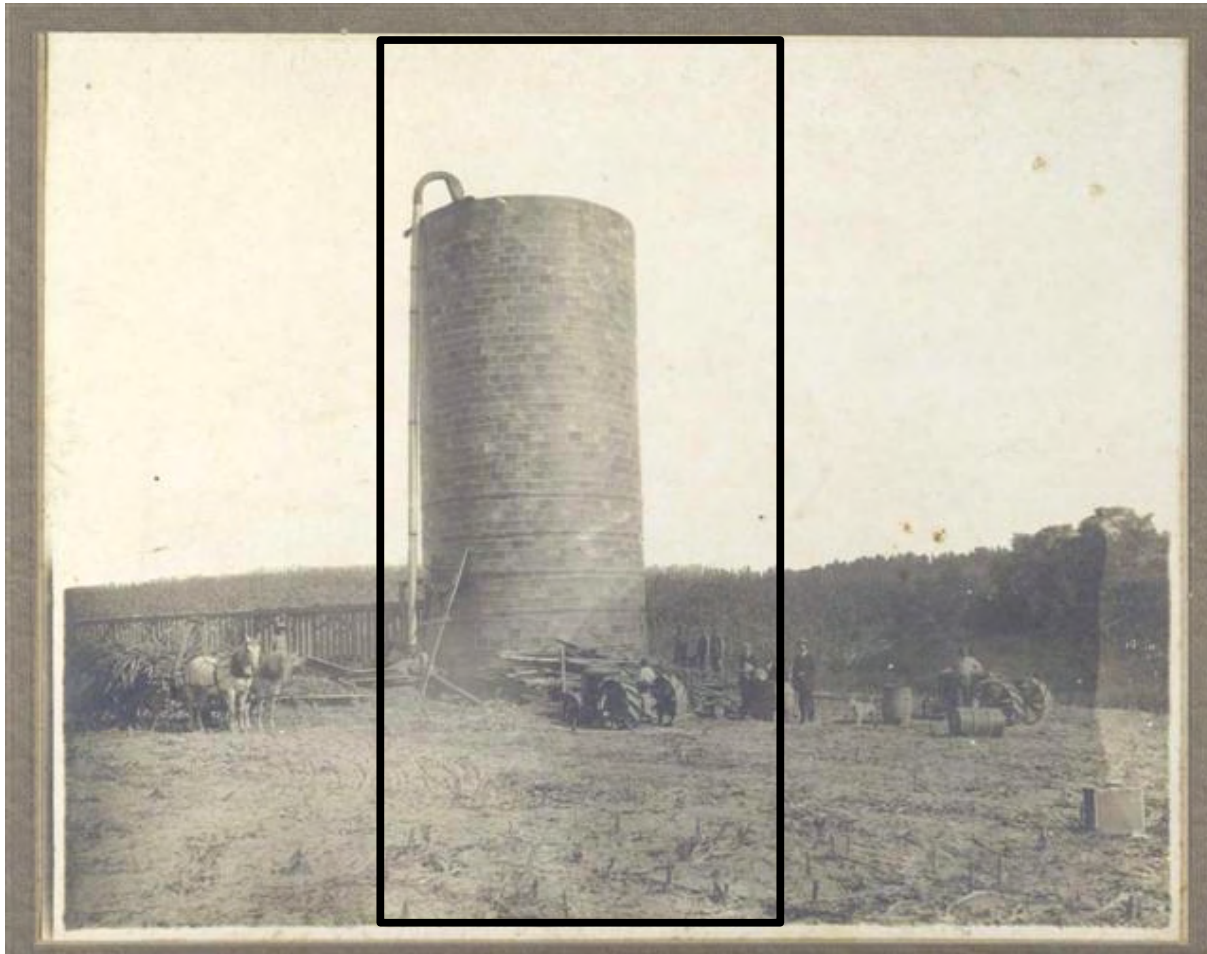




Montgomery Museum and Lewis Miller Regional Art Center
300 S. Pepper Street
Christiansburg, VA 204073
(540) 382-5644
www.montgomerymuseum.org



**From the Farm:
The History of Montgomery County Agriculture**



The silo that designates the interpretive material in this exhibit is from an early twentieth century photograph that is part of the Museum's permanent collection.

Taken near Riner, it illustrates the transitional period on Montgomery County farms where horses and tractors were both in use.

The hollow core tile silo is an early version of this iconic agricultural structure. Tile silos were replaced by metal and concrete block silos during the mid-twentieth century. Simple pit or in-ground silos were also common.

The three central themes that organize the exhibit illustrate the complex and pervasive nature of agriculture in Montgomery County. These themes are: the intense work on the farm that made up the lives of farmers and the farm practices that have been all but forgotten with time, the business and industry that were spurred by the county's agricultural production, and the role of agriculture in education and community life generally.

We would like to acknowledge and thank the following people and organizations for their contribution to this exhibit.

James and Sarah Akers
Katie M. Altizer
Beasley Family
E. J. Clower
Kenneth A. Clower
William Harman
Wayne Haymaker
Dr. John Hillison
Mary Jo Horton
Jean Galloway
D. D. Lester Family

Carl and Ramsey McNeil
Nick McNeil
Bob Poff
Bob and Yvonne Silvers
Elizabeth J. Sowers
Thompson-Hagan Drug Store
Virginia Tech Department of Agriculture
S. J. Wimmer and Son
Gernon Wall
Mary Z. Young